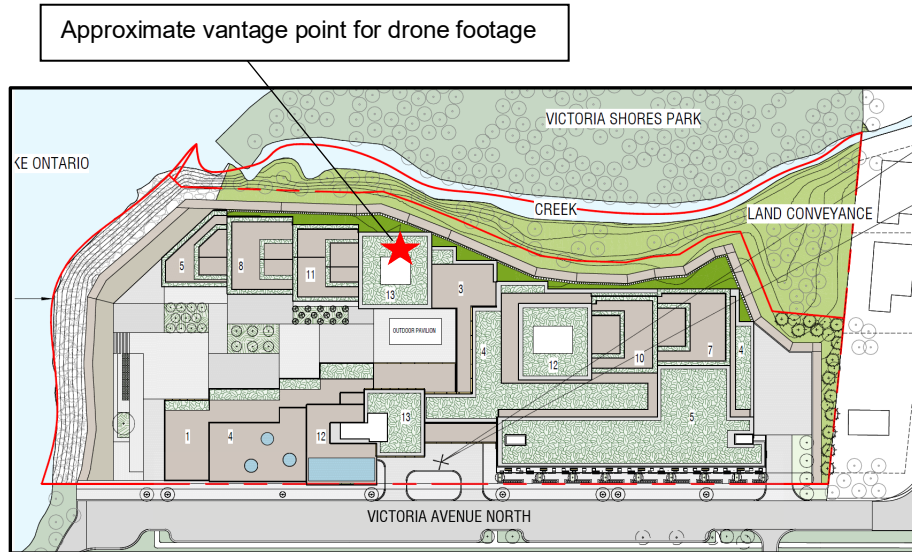


4933 Victoria Avenue North
Drone photos facing easterly towards South Shore Blvd
(taken on September 4, 2024, provided by Globizen)



a) 10 metre elevation (i.e. 2nd floor)



b) 20 metre elevation (i.e. 6th storey)



c) 30 metre elevation (i.e. 9th storey)



d) 40 metre elevation (i.e. 11th storey)

