

# Angelina Prokich Park Final Design Concept



## Sport, Recreation & Culture Committee

Wednesday, October 4<sup>th</sup> , 2017 - 7:00 p.m.

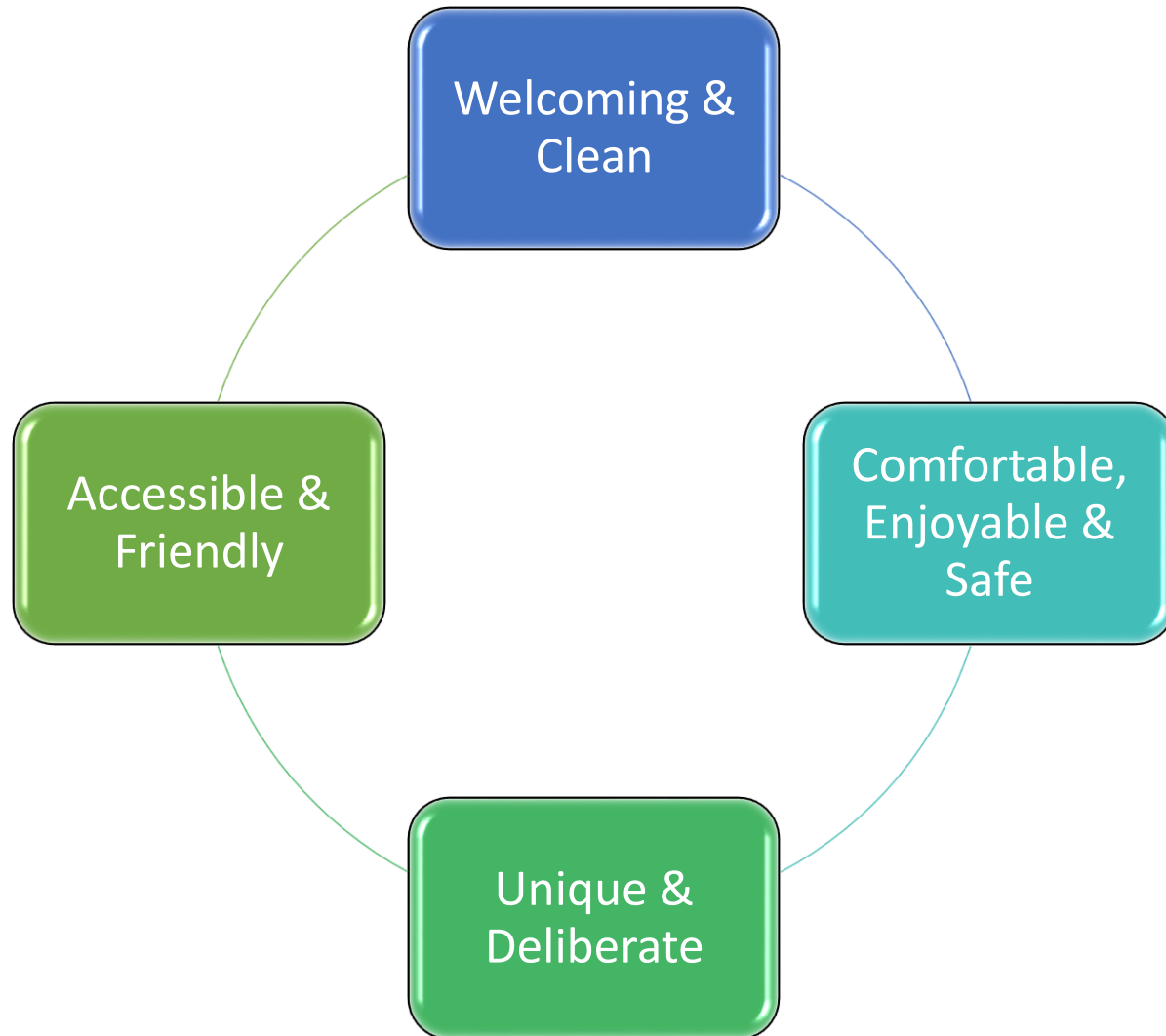
## Agenda

- Parks Master Plan
- Parks Guiding Principles Approved by Council
- Cost Breakdown by Park Component
- Angelina Prokich Park Early Design Concepts
- Community & Resident Feedback
- Final Design Concept & Imagery

# Town of Lincoln Parks Master Plan

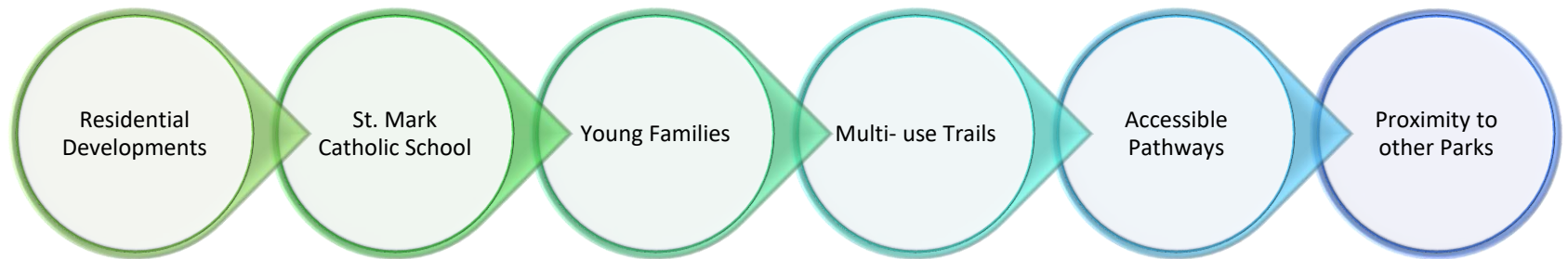
- Important to quality of life is parks & recreation
- Development of a Parks Master Plan represents a commitment to open space and recreation
- A Parks Master Plan will :
  - Enhance & increase facilities & programs to fully serve the Town's diverse needs;
  - Identify a strategy to provide high quality well distributed parks & recreational facilities;
  - Increase effective use facilities; and
  - Enhance the appearance of park facilities through maintenance programming and renovations.

## Guiding Principles Approved by Council



## Angelina Prokich Park

- 2009 / 2010 Park Inventory & Analysis:



## 2010 Concept Elements

- **Nodes** - Areas of entry into the park. consist of signage, seating, planting/landscaping
- **Multi-use Court** - To accommodate various court games (ie. tennis, basketball & ball hockey)
- **Spray/Splash Pad** - Space for water play
- **Shade/Picnic Areas** - Consisting of a structure to provide shelter from sun and wind and space for viewing
- **Senior Play** - Play area that is suitable for ages 5-12 and consists of play structures creates challenges and experimentation.
- **Junior Play** - Play area that is suitable for ages 2-5 and consists of play structures encourages movement and ability.
- **Seating** - Passive areas that provide seating for viewing and relaxation.
- **Open Lawn** - Open area that provides enough space to accommodate various unregulated field sports and passive recreational activities.
- **Naturalized Buffers** - Areas allocated for the introduction of native trees and shrubs to create partial screening.

## 2017 Concept Design Objectives

- Build on 2010 inventory & analysis work
- Plan & prioritize based on \$1,000,000 budget
- Consider unique park elements / features
- Receive feedback from neighbourhood residents
  - Ward 2 Public Meeting (June 13<sup>th</sup>, 2017)
  - Online Feedback Form (throughout June)
- Incorporate resident feedback on priority needs
- Finalize a design concept
- Complete detailed design & specifications
- Plan for Construction

## Cost Breakdown by Component

### **Common Neighbourhood Park Elements (\$300,000 - \$400,000)**

- Jr. & Sr. Play Structures
- Multi-Use Court
- Misc. Site Furniture (signage, benches, bike racks & garbage receptacles)
- Parking Lot
- Shade Structures

### **Required Site Work & Servicing (\$400,000 - \$500,00)**

- Pathways & Paving
- Site Work & Servicing
- Soft Landscaping

### **Feature Park Elements (\$100,000 - \$300,000)**

- Spray/Splash Pad
- Unique Park Structures
- Tennis Courts



[illegible]

Town of  
**Lincoln**

# Angelina Prokich Park



Concept B  
(June 2017)

## Results of Community Engagement

- Guiding Design Imperative:  
***That Angelina Prokich Park be a neighbourhood park with amenities for all ages.***
- Most desired & important elements identified by users were:
  - Benches
  - Creative / Unique Equipment\*
  - Green / Open Space – for free play
  - Junior & Senior Play Structures
  - Multi-purpose court
  - Parking
  - Park Loop/Pathway
  - Shade Structures
  - Splash/Spray Pad (affordable)\*
  - Tennis Courts\*

*\* Denotes 'feature' elements outside of typical program elements.*

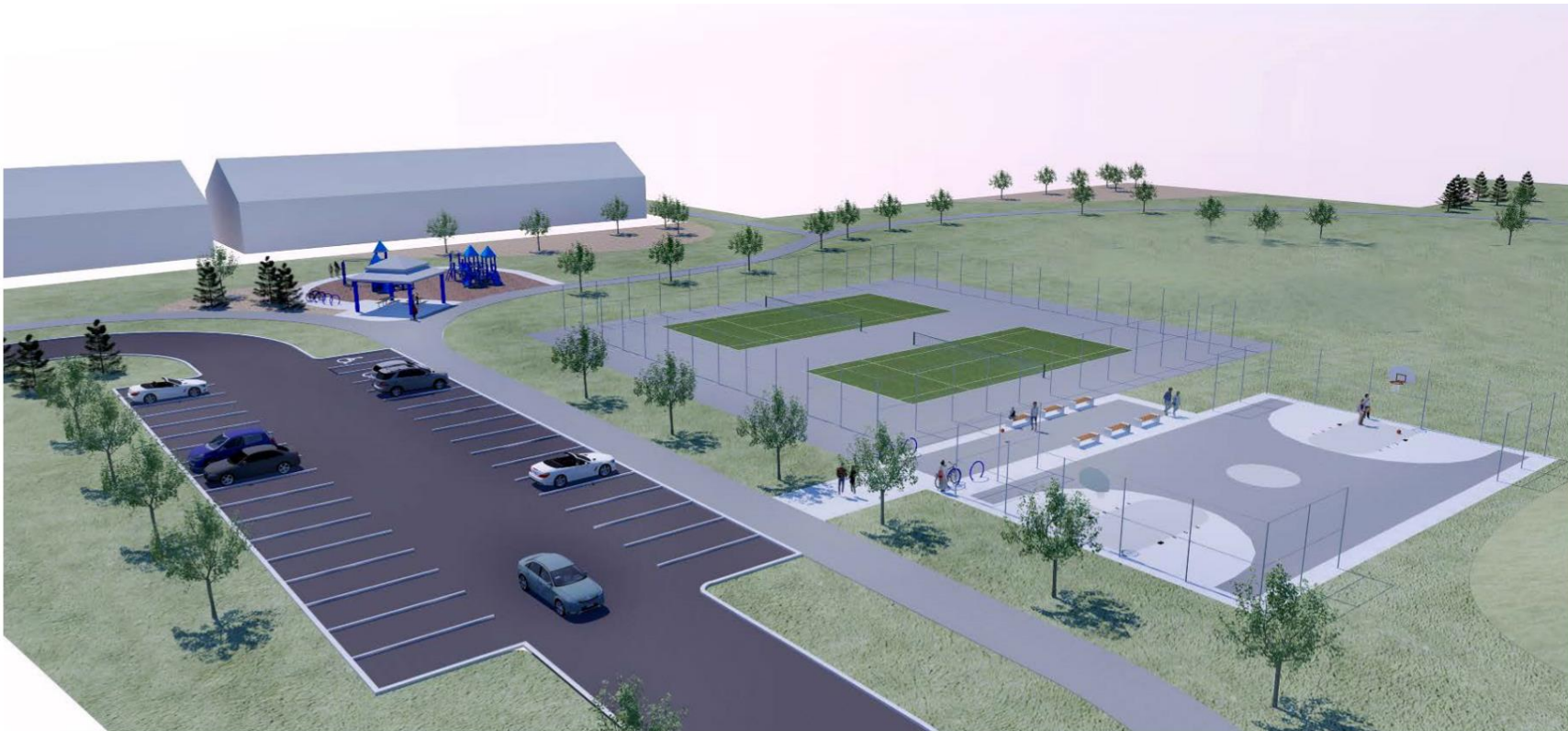


# Angelina Prokich Park



**Final Design Concept  
(September 2017)**

# Angelina Prokich Park



Overview of Playground, Tennis Courts and Multi-use Court



# Angelina Prokich Park



*Tennis Courts and Multi-use Court*

# Angelina Prokich Park



Playground



# Angelina Prokich Park



View towards Playground and Courts



# Angelina Prokich Park



*Splash Pad and Trellis*

## Next Steps

- Park Signage
- Finalize working drawings, specifications & documents
- Site preparation work to begin late 2017
- Park element procurement process end of 2017/ 2018
- Spring construction start / target late summer finish

